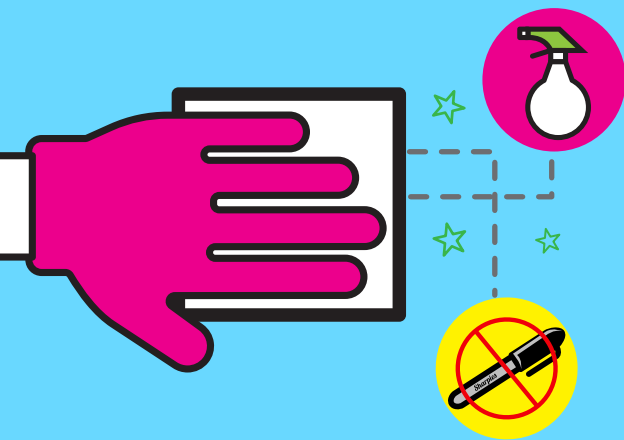


All Dry Erase

Care & Cleaning Instructions

NORMAL CARE

- All Dry Erase panels may be washed as often as required.
- Use clean water or cleaner specifically sold to be used on dry erase surfaces. We do offer email or call for pricing.
- Use of isotropy alcohol or alcohol wipes is also a great cleaning tool.
- **DO NOT USE ABRASIVE CLEANERS** on the dry erase surface as they will scratch the surface and mar the finish

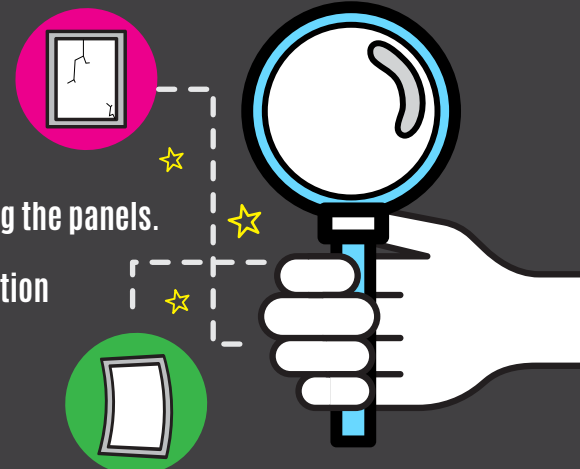


STUBBORN STAINS

- Permanent markers, lipstick, fingernail polish, etc. can be removed from our Murerase® boards with isotropy alcohol or mineral spirits without damaging the surface. Clean and rinse well with water and allow to dry complete.
- **DO NOT** use sharp instruments to remove adhesives or other foreign materials. Contact DDS for recommended solvents to help with tough stains

INITIAL CARE

- Inspect all shipments for damage immediately upon receiving the panels.
- Store panels only in controlled climate areas prior to installation
- Store panels **FLAT** and fully supported on the bottom
- **DO NOT** lean panels against walls for storage as they will bow.



CALL OR EMAIL WITH QUESTIONS

484-472-6679
support@alldryerase.com