

HIGH-VISIBILITY LES RETAIL
DOUBLE-HEIGHT SIGNAGE POTENTIAL

126-128 DELANCEY STREET

Between Norfolk & Essex Streets

DIVISIONS

126 DELANCEY STREET Ground Level: **Approx. 2,331 SF** | Frontage: **Approx. 24'**
128 DELANCEY STREET Ground Level: **Approx. 1,300 SF** | Frontage: **Approx. 16' 2"**

POSSIBLE TO COMBINE

Ground Level: **Approx. 3,631 SF** | Basement: **Approx. 3,315 SF** | Frontage: **Approx. 40' 2"**
Term: **Negotiable** | Possession: **Arranged** | Asking Rent: **Please Inquire**

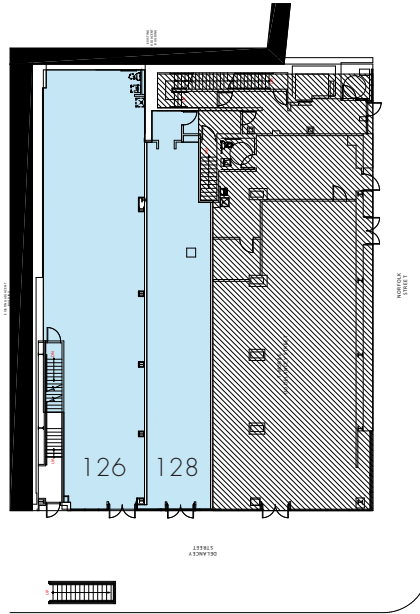


NEIGHBORS

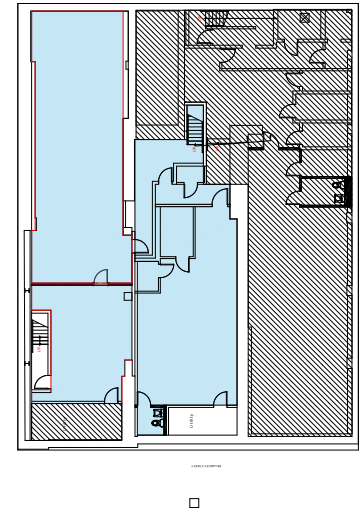
- Regal Cinemas
- Essex Market
- The Gutter Bowling Alley
- Target
- Market Line
- City MD
- International Center Of Photography
- Trader Joes
- T-Mobile
- Metro PCS
- NYU Langone
- Fabco Shoes
- McDonald's
- Chase

SPACE NOTES

- All uses, venting possible
- FMJZ subway station directly in front of the store
- New storefronts have been installed
- Double-height signage available



GROUND FLOOR



BASEMENT

LOCATED AT THE CROSSROADS OF THE NEW **ESSEX CROSSING DEVELOPMENT** & THE WILLIAMSBURG BRIDGE

- Essex Crossing: 1.9 million square foot development
- 350,000 square feet of office space
- 1,000+ residential units
- 100,000 square feet of green space
- 150,000 square foot Market Line
- Over 71,000 cars pass by daily
- Directly in front of the Delancey subway station with an average of 24,000 passengers daily

PLEASE CONTACT

Christopher Owles
212.604.9002
chris@sinvin.com

Margie Sarway
646.673.8742
margie@sinvin.com



 ESSEX CROSSING DEVELOPMENT

