



SPACE FEATURES:

- Medical or Community Service use (school, non profit)
- South facing filled space with natural light above street level for added privacy
- Renovated space with exposed ceilings and refinished hardwood floors
- Plumbing in place to install a wet pantry
- Restroom inside the space
- Entrance through elegant attended building lobby

BUILDING FEATURES:

- Located on prime lower Fifth Avenue, steps from Washington Square Park
- Emery Roth prewar building that was once the Fifth Avenue Hotel (1926)
- Walking distance from Union Square subway station (4,5,6,L,N,Q,R,W) & West 4th Street subway station (A,B,C,D,E,F,M)

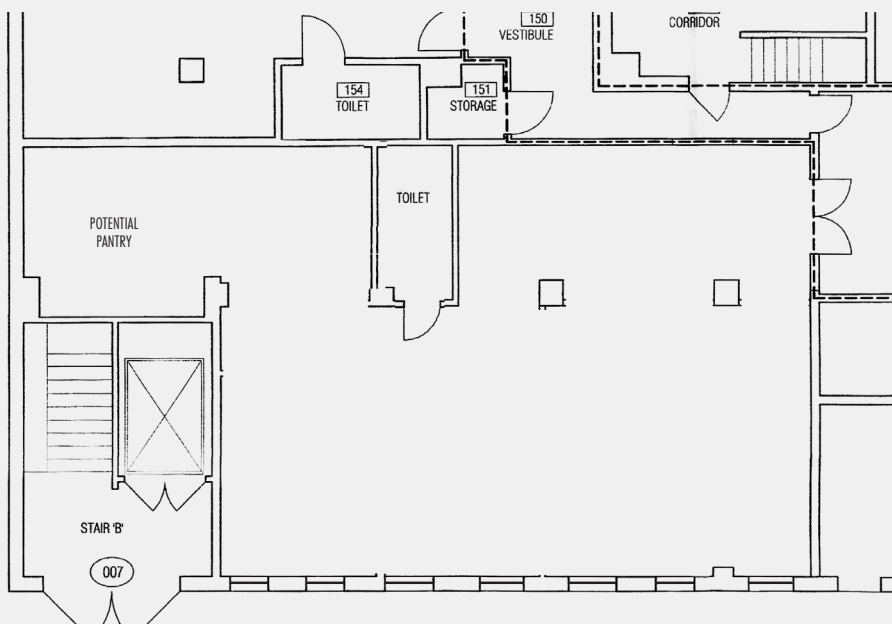
RENOVATED PROFESSIONAL SPACE AT THE BASE OF AN ELEGANT PRE-WAR GREENWICH VILLAGE BUILDING

Ground Level: **1,187 Square Feet** | Possession: **Immediate**

Ceiling Height: **10' 10"** | Asking Rent: **Please Inquire**

JOIN THE OTHER GREAT TENANTS OF THIS BUILDING SURROUNDED BY HIGH-END RESIDENTIAL

- Forbes on Fifth (event space)
- Claudette (Casa Nela Restaurant Group)
- Neal K Fujishige DDS (New York Dental Group)



CONTACT:

Charlotte Sardet

646.673.8743

charlotte@sinvin.com

SINVIN
COMMERCIAL REAL ESTATE & ADVISORY