

2 FULL FLOORS WITH INCREDIBLE
LIGHT & VIEWS AT THE CORNER
OF CHURCH STREET

5th Floor | 15th Floor

THIRTY VESEY

ENTIRE 5TH FLOOR

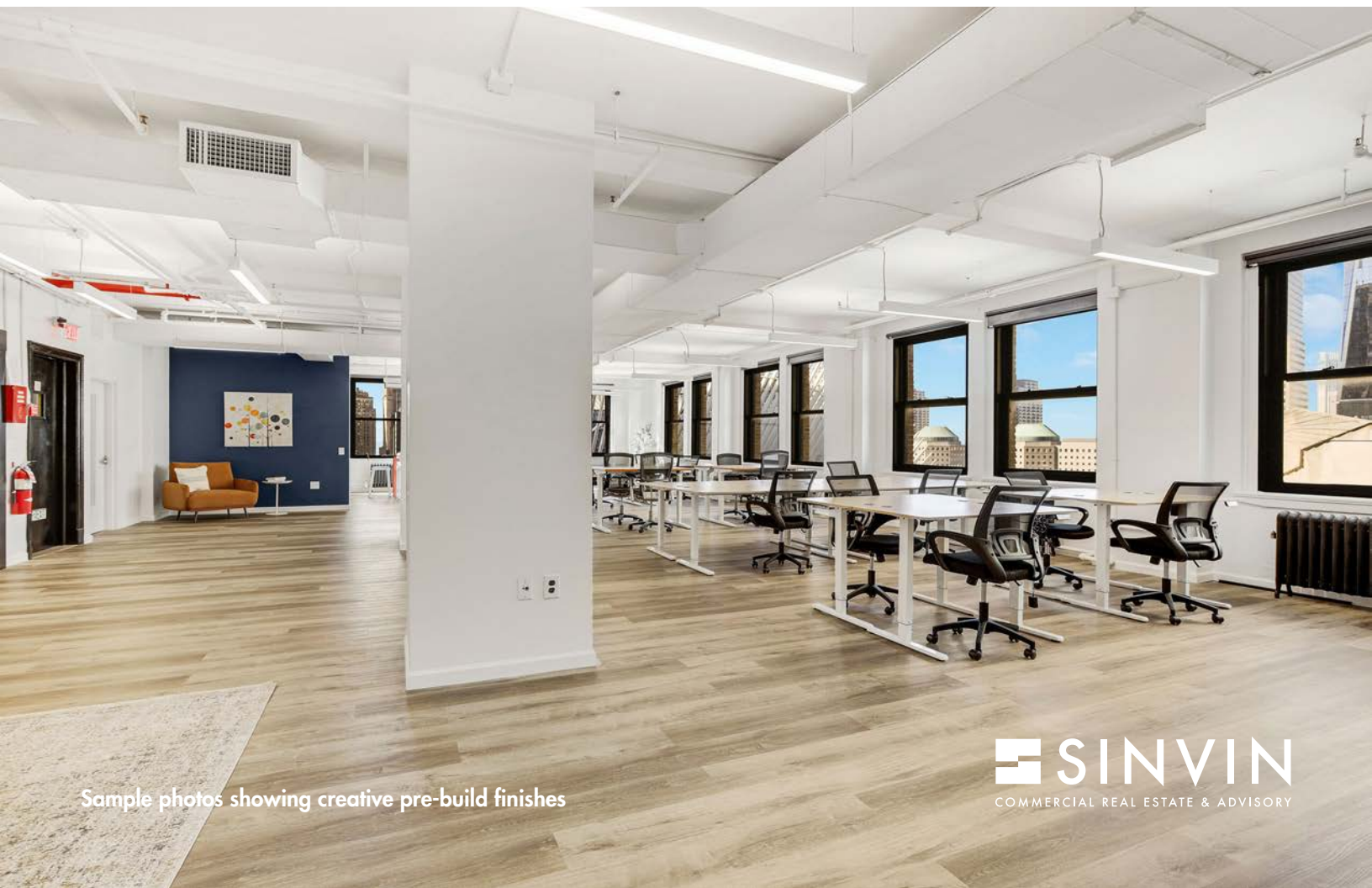
Size.....4,826 RSF
Term.....Negotiable
Possession.....Immediate
Asking Rent.....Please Inquire

ENTIRE 15TH FLOOR

Size.....4,826 RSF
Term.....Negotiable
Possession.....Immediate
Asking Rent.....Please Inquire

NOTES:

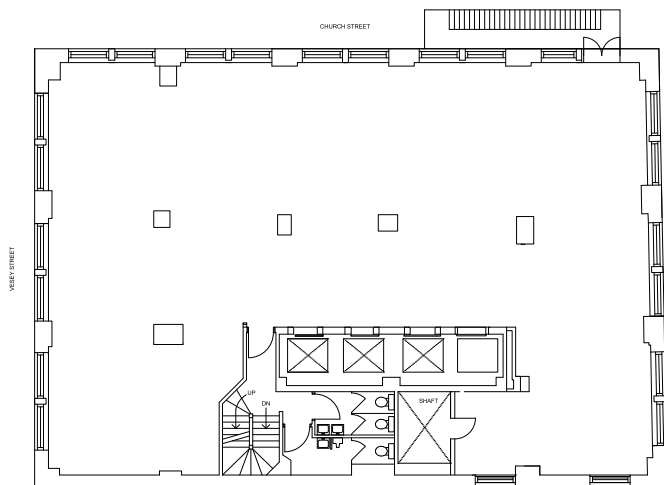
- Full floor with four sides of windows and unobstructed Hudson River, uptown, and downtown views
- New creative pre-build underway
- Tenant-controlled A/C
- Attended lobby and brand-new elevators



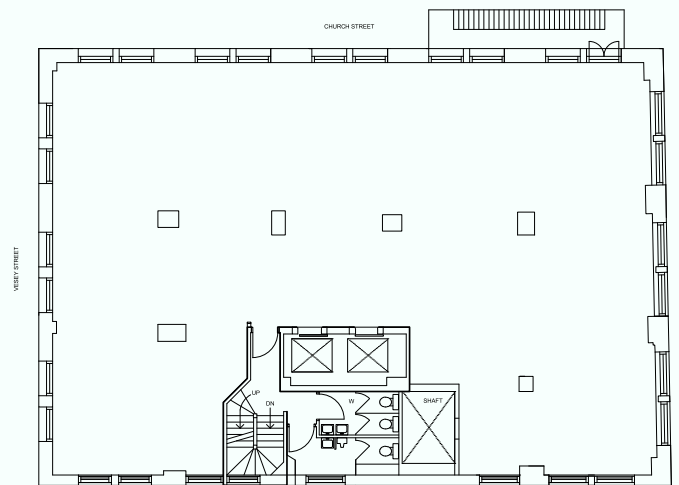
Sample photos showing creative pre-build finishes

Sample photos showing creative pre-build finishes

ENTIRE 5TH FLOOR



ENTIRE 15TH FLOOR



Sample photos showing creative pre-build finishes



THIRTY
VESEY

PLEASE CONTACT:

James Costello

646.599.2391

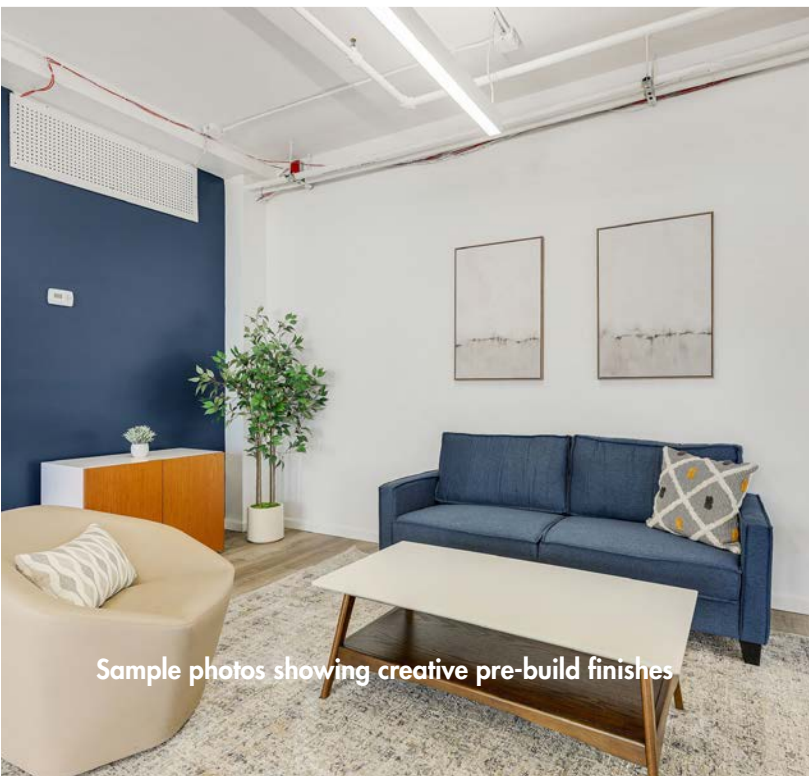
james@sinvin.com

Trisha Etienne

646.201.5144

trisha@sinvin.com

 **SINVIN**
COMMERCIAL REAL ESTATE & ADVISORY



Sample photos showing creative pre-build finishes