

HIGH-END GALLERY SPACE.
EXCEPTIONAL BUILDING AMENITIES.

 **SIN VIN**
COMMERCIAL REAL ESTATE & ADVISORY

529

WEST 20TH STREET

Between 10th & 11th Ave.

BUILDING NOTES

- Prestigious tenant roster
- Brand new attended lobby and building marquee
- Oversized freight elevator and two passenger elevators
- Polished concrete floors and high, exposed ceilings
- Located in the heart of the Chelsea Arts District and surrounded by the world's most prominent art galleries

DETAILS

Unit 10E.....5,943 RSF
Possession.....June 1, 2026
Term.....Negotiable
Asking Rent.....Please Inquire

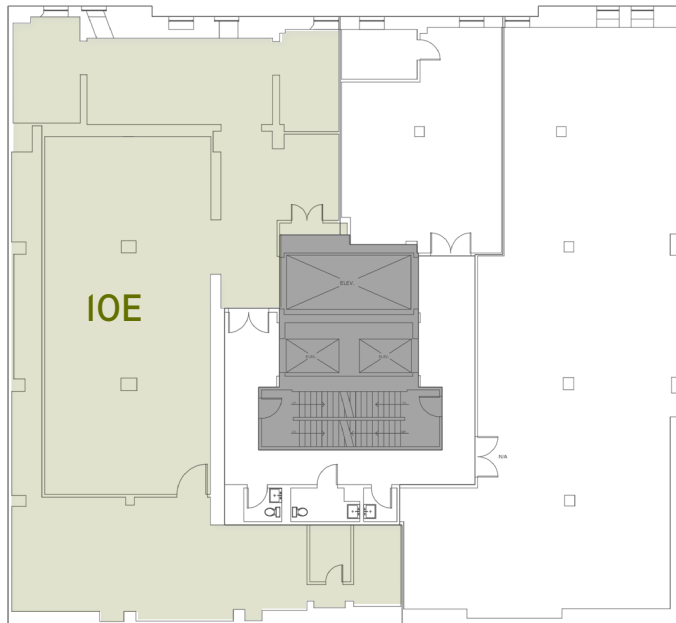
10E

NOTES

- Museum-quality gallery space located on the entire eastern half of the floor
- Large exhibition area and built-in reception desk directly off the entranceway
- Windowed gallery and private office facing 20th Street
- Large art storage room
- Freight elevator opens directly into the space

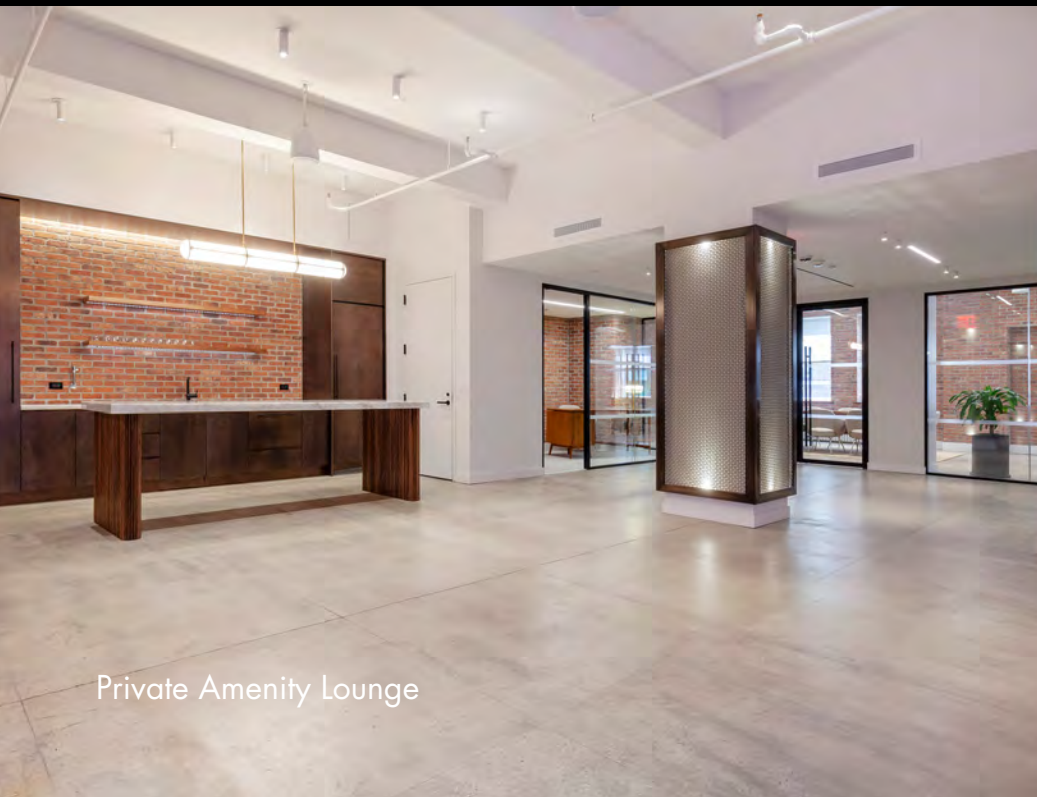






[VIDEO TOUR](#)

[AMENITY SPACE 3D TOUR](#)



SINVIN
COMMERCIAL REAL ESTATE & ADVISORY



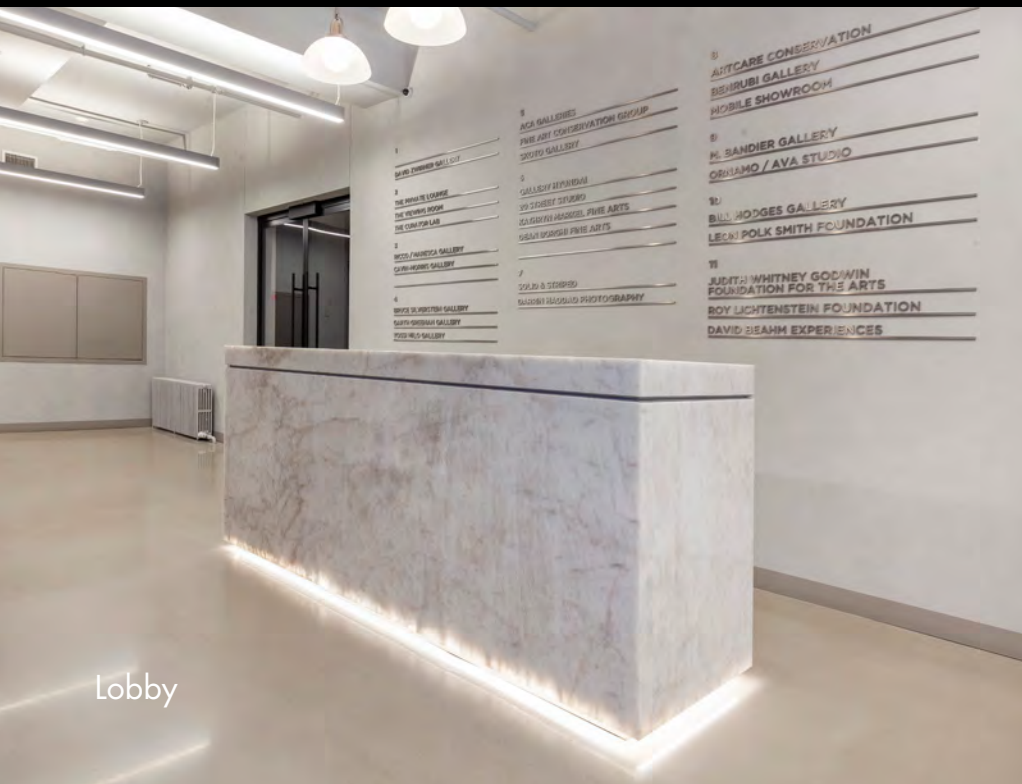
Private Amenity Lounge

BUILDING AMENITIES

- High-end private amenity lounge with full wet pantry
- Fully equipped conference rooms with presentation capabilities
- State-of-the-art fitness center with showers
- The Curator Lab: a flexible art exhibition space on the 2nd floor
- Art storage and viewing rooms (under construction)

[VIDEO TOUR](#)

[AMENITY SPACE 3D TOUR](#)



Lobby



Private Amenity Lounge

SINVIN
COMMERCIAL REAL ESTATE & ADVISORY



TENANTS AT 529 ARTS

- Ricco Maresca Chelsea
- Cavin-Morris Gallery
- Bruce Silverstein
- Garth Greenan Gallery
- Yossi Milo Gallery
- ACA Galleries
- Fine Art Conservation
- Skoto Gallery
- Gallery Hyundai
- Kathryn Markel Fine Arts
- Dean Borghi Fine Arts
- Darrin Haddad Photography
- Solid & Striped
- ArtCare Conservation
- Benrubi Gallery
- Max Bandier Gallery
- Ornamo LLC & Ateliers Vallin Avignant
- Bill Hodges Gallery
- Leon Polk Smith Foundation
- Judith Whitney Godwin Foundation for the Arts
- Roy Lichtenstein Foundation
- David Beahm Experiences

PLEASE CONTACT

Christopher Owles

212.604.9002 | chris@sinvin.com

James Costello

646.673.8752 | james@sinvin.com

Trisha Etienne

646.201.5144 | trisha@sinvin.com

