



NOTES:

- Full floor with excellent light and views from four sides of windows and a large skylight
- 2 conference rooms, 4 offices, and open workstations for 80-90
- Hardwood floors and exposed ceilings
- Tenant-controlled A/C
- Attended lobby with 3 passenger elevators on Broadway & Bond St.
- Located in the heart of Noho with easy access to multiple subway lines
- Space can be delivered fully furnished

666

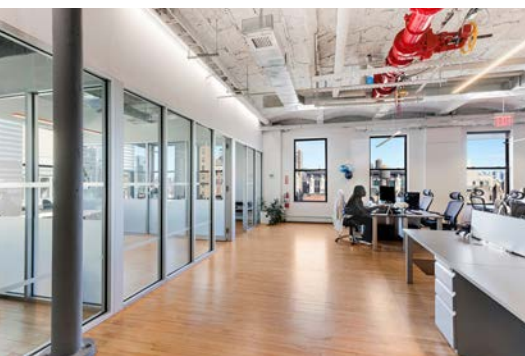
BROADWAY

Southeast Corner
of Bond Street

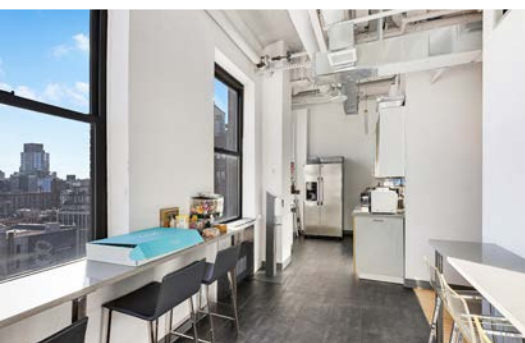


Floor
ENTIRE 12TH

Size
8,000 RSF



Ceiling Height
12 FEET



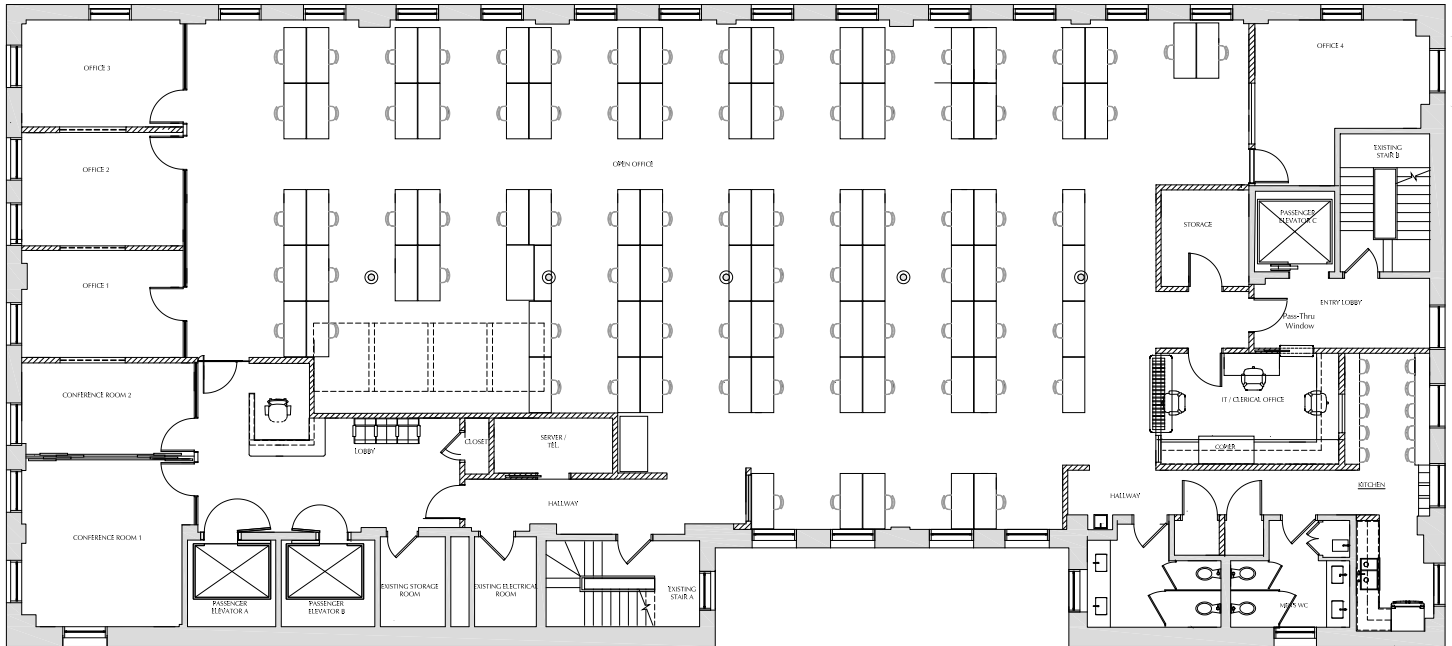
Term
NEGOTIABLE



Possession
ARRANGED

Asking Rent
INQUIRE

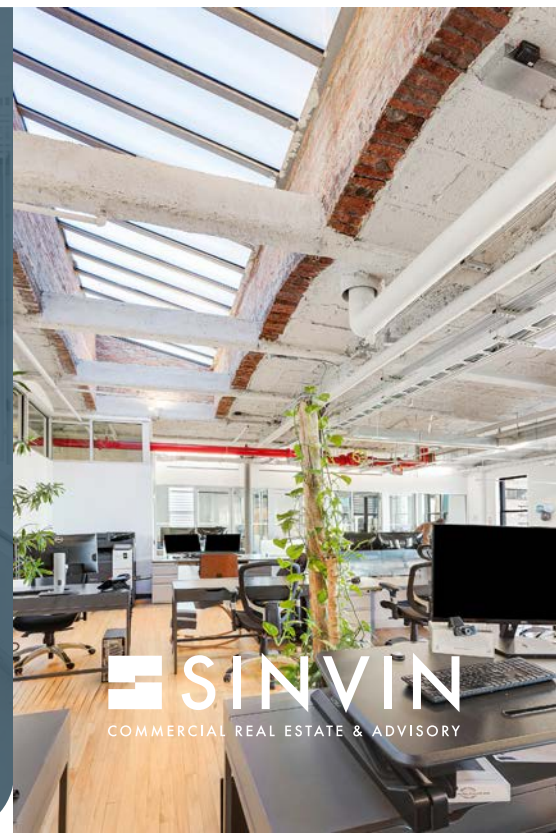
ENTIRE 12TH FLOOR



PLEASE CONTACT:

Christopher Owles
212.604.9002
chris@sinvin.com

James Costello
646.599.2391
james@sinvin.com



SINVIN
COMMERCIAL REAL ESTATE & ADVISORY