

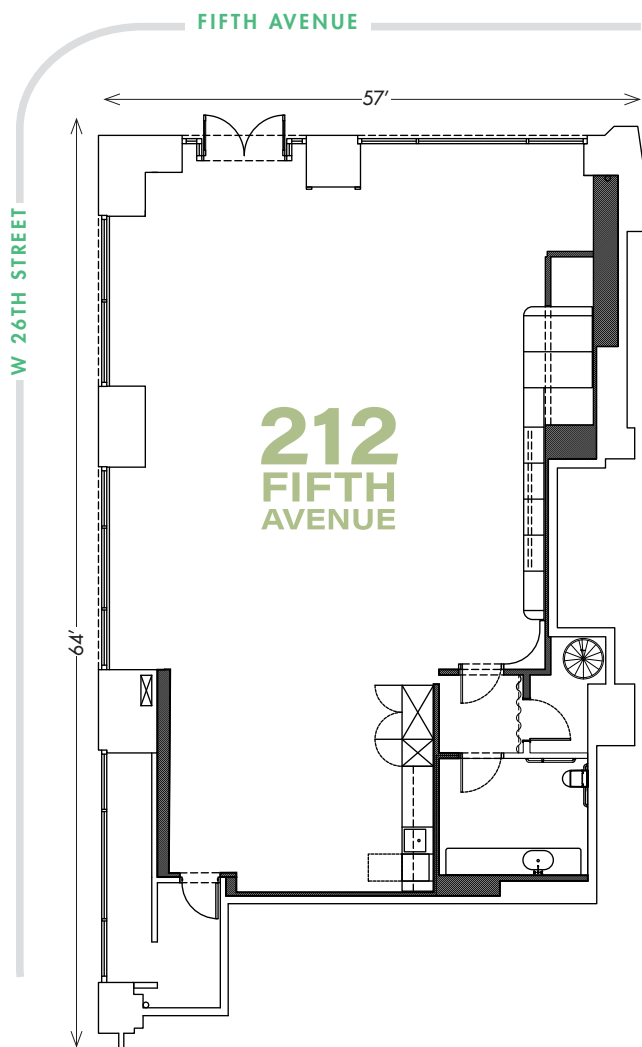


**212
FIFTH
AVENUE**



PRIME NOMAD RETAIL
Southwest Corner of West 26th Street & Fifth Avenue





DETAILS INCLUDE:

Ground Level: 2,331 SF
Direct access to second-floor storage room of approximately 100 SF

Frontage: 57' on Fifth Ave,
64' on West 26th Street

Ceiling Height: Up to 16'

Possession: Immediate

Asking Rent: Please Inquire



NOTES:

- Spectacular NoMad corner retail with high ceilings
- Landmarked façade known for its neo-gothic architecture
- Excellent exposure with over 120+ feet of wraparound frontage
- Five large display window bays and a double door entry
- Steps from the Flatiron Building, NoMad Design District, and across from Madison Square Park

NEIGHBORS INCLUDE:

- Porcelanosa
- Boffi | DePadova
- Harbour
- Blu Dot
- Todd Snyder
- Rizzoli Bookstore
- Eataly
- Whole Foods
- Mark's Off Madison
- La Pecora Bianca
- The Smith
- Pura Vida
- Aveda
- MALIN+GOETZ



**212
FIFTH
AVENUE**

PLEASE CONTACT:

Michael Glanzberg
212.604.9004
michael@sinvin.com

Teddy Srour
646.201.5143
teddy@sinvin.com