

2 FULL FLOORS WITH INCREDIBLE
LIGHT & VIEWS AT THE CORNER
OF CHURCH STREET



2nd Floor | 12th Floor

THIRTY VESEY

ENTIRE 2ND FLOOR

Size.....4,826 RSF
Term.....Negotiable
Possession.....Immediate
Asking Rent.....Please Inquire

ENTIRE 12TH FLOOR

Size.....4,826 RSF
Term.....Negotiable
Possession.....Immediate
Asking Rent.....Please Inquire

NOTES:

- Full floors with four sides of windows on the 12th floor
- 12' ceilings and oversized windows on the 2nd floor
- Unobstructed views of Midtown, Downtown, and The Hudson River
- Landlord to deliver brand-new creative installations
- Can be delivered furnished
- Tenant-controlled A/C
- Attended lobby and brand-new elevators
- Convenient to multiple subway lines and the NJ PATH

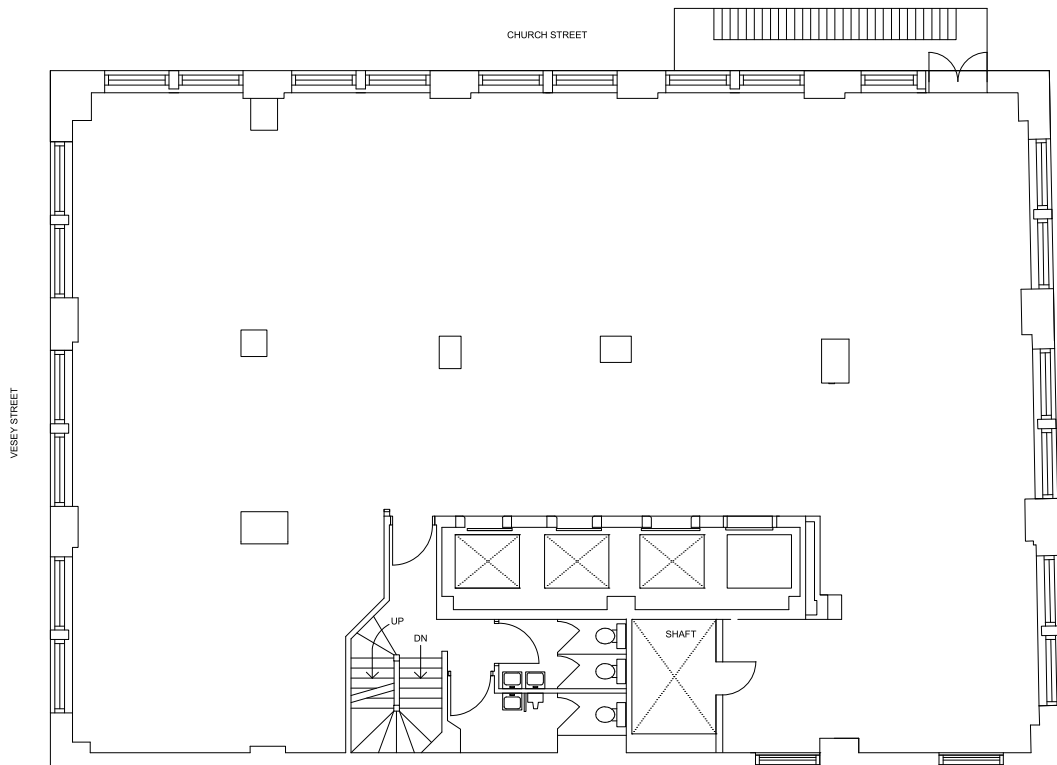


Sample photos showing creative pre-build finishes



Sample photos showing creative pre-build finishes

FLOOR PLAN



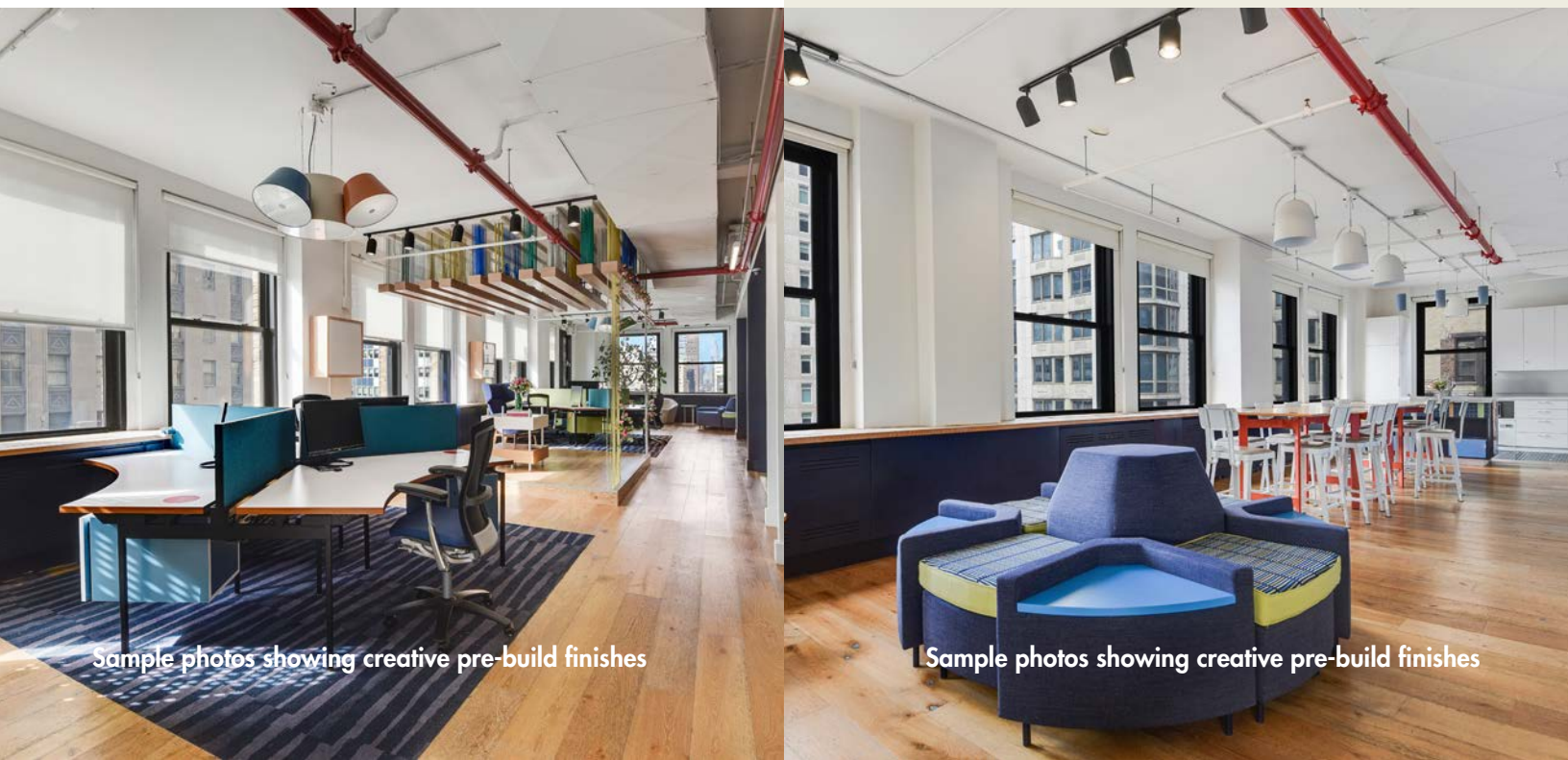


Sample photos showing creative pre-build finishes

THIRTY VESEY

PLEASE CONTACT:

James Costello	Trisha Etienne
646.599.2391	646.201.5144
james@sinvin.com	trisha@sinvin.com



Sample photos showing creative pre-build finishes

Sample photos showing creative pre-build finishes