

356

BROADWAY

Between Leonard
& Franklin Streets





Frontage: 30' | Term: 5-10 Years | Possession: Immediate | Asking Rent: Please Inquire

Ground Level
2,838 SQ FT

Lower Level
1,000 SQ FT

Sub Lower Level
600 SQ FT



NOTES:

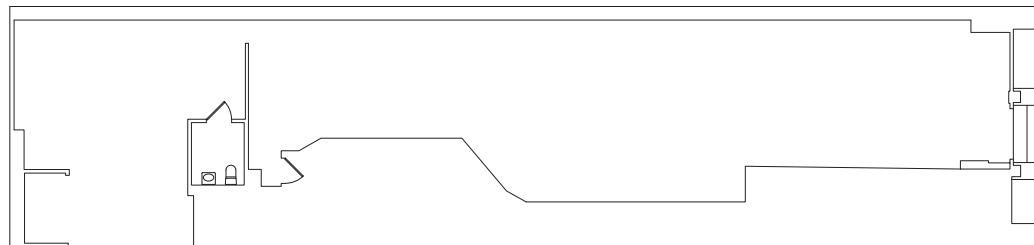
- All-glass double-height storefront
- Perfect space for gallery and design concepts
- In the heart of Tribeca's Art and Design District
- Up to 1,650 SF of basement space as well as a possibility of building a storage mezzanine



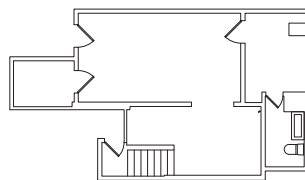
NEIGHBORS:

- Think Coffee
- AT&T
- Jaxon James
- Gourmet Garage
- Billy's Bakery
- Farra
- Crunch Fitness
- SLT
- Frenchette Bakery
- Aire Ancient Baths

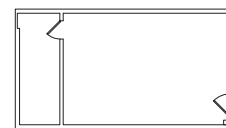
GROUND LEVEL



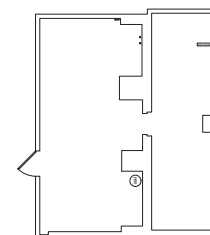
LOWER LEVEL



LOWER LEVEL



SUBLLOWER LEVEL



PLEASE CONTACT:

Jane McVerry | 212.604.9005 | jane@sinvin.com