

TWENTYVESEY

BETWEEN BROADWAY AND CHURCH STREET

SUITE 201

Size.....5,000 RSF

PossessionImmediate

Term5-10 Years

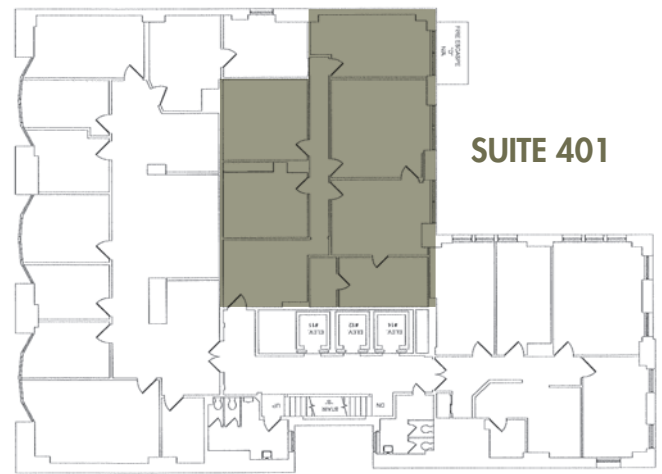
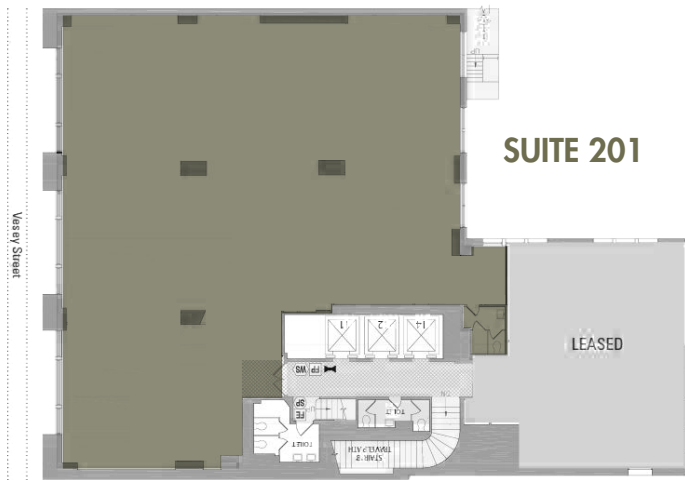
*South facing unit with
large windows overlooking
St. Paul's Chapel*

SUITE 401

Size.....1,850 RSF

Possession.....Immediate





NOTES:

- Steps from Fulton Transit Center and WTC Path Station
- Attractive option for a variety of users including financial services, technology, law firms, and creative companies
- 3 recently modernized passenger elevators
- Low loss factor

PLEASE CONTACT:

James Costello
646.673.8752
james@sinvin.com

Trisha Etienne
646.201.5144
trisha@sinvin.com