

182  
SPRING  
STREET

AT THE CORNER OF SPRING  
& THOMPSON STREETS

Designed by Annabelle Selldorf Architects

CORNER RETAIL



# CORNER RETAIL

GROUND LEVEL

1,100 SQ FT

WRAPAROUND FRONTAGE

60 FT

CEILING HEIGHT

10' 9"

POSSESSION

IMMEDIATE

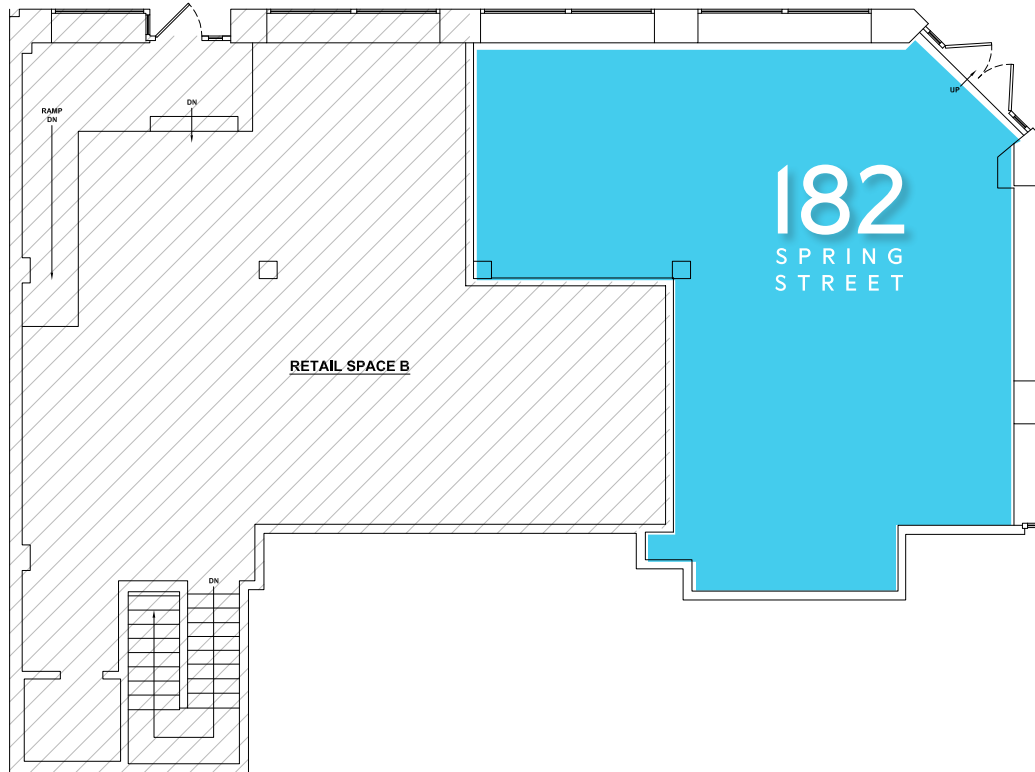
ASKING RENT

PLEASE INQUIRE



# CORNER RETAIL

GROUND LEVEL



182  
SPRING  
STREET



# AREA RETAILERS

EMPORIO ARMANI GUCCI  
**JACQUEMUS** SALOMON  
 COS CHANEL MACKAGE  
 ANTHROPOLOGIE  
 VARLEY DOMINIQUE ANSEL  
 BAKERY

# NEARBY HOSPITALITY

- Soho Grand Hotel
- The Crosby Hotel
- The Mercer Hotel
- The Manner
- Raoul's
- Balthazar
- Sartiano's
- Laduree

# KEY FEATURES

- Immaculate retail space at the base of a newly developed luxury boutique building designed by the award winning, Annabelle Selldorf Architects
- 60' of wraparound all-glass frontage on Spring and Thompson Streets
- Located one block from the C, E, R, W, 1 Subway trains
- A true mixed use neighborhood with office, residential and hotel density
- Rare corner availability in SoHo
- No vented food uses

**SULLIVAN STREET**

- SOHO ROOM
- BANDONE
- HEAVENLY DELI
- DOMINIQUE ANSEL BAKERY
- SPRING STREET WINE SHOP
- SO RATE
- ALIDORO
- ANONYMOUS SALON
- DALYA
- GLOBAL TABLE
- VILLAGE TAILOR
- VILLAGE COBBLER
- SOHO NEWS
- MAT FULL
- RAOULS
- IL COBALLO TRATTORIA
- ELY MEDICAL WEAR
- ANNE WEAVER JEWELRY
- HEAVENLY MARKET

**THOMPSON STREET**

- BEN'S PIZZA
- BOQUERIA
- SALOMON
- MACKENZIE CHIDS
- ANTHROPOLOGIE
- SEIKO
- VUARNET
- DARSCHUTZKE
- HEART & LOU'S
- OLD FASHION CAFE
- GABRIELA CEBALLOS
- Aesop
- MILILEMOON
- JULIA TESTA
- OMEN
- MAKIE
- NER BER HUD COFFEE
- Peter Hermann Leathersgoods
- FAINT BOX SOHO
- NO NAME VINTAGE
- MAD GROCERY
- AG NAIL
- LAMY
- ORESH
- SUGARWOOD
- THMS OD SOHO
- VILPREDIUM
- RAOULS
- RAPHA

**WEST BROADWAY**

- RING CONCIERGE
- MENALLY JACKSON
- nanamica
- antonio marra
- SCAVOLINI
- SEE
- JACOBIA CENTERPOINT
- Sorrel SKY
- MISS CIRCLE
- HALCYON
- MARK WEST GALLERY
- vunglass fruit
- Loper sawel
- hure'g'rand
- qpm
- MONICA VINAER
- PIOMBO
- JOHN HARDY 2026
- GERARD DAREL
- JACQUEMUS
- MEXALLI JACKSON
- Another Tomorrow
- LIP.LAB
- MARC JACOBS
- EVER/BODY
- HALSTEAD PROPERTY
- FAHERTY

**WOOSTER STREET**

- CHANEL
- adidas
- BURBERRY
- COS
- ETRO
- tibi
- CHANEL
- Ray-Ban
- DIOR HOMME
- Dior
- BOTTEGA VENETA
- FANA
- cinq/sept
- TIFANY & CO.
- SALVATORI
- MULBERRY
- ERIC EMANUEL
- BADAUD
- Jiliani
- JO MALOFE
- FREDERIC MALLE
- TOM FORD
- JOHN HARDY
- David Yurman
- BOMBEN
- BARBER SHOP
- KELY FRAZIER HAIR
- MANSION PROPERTY GROUP
- THE MONTESSORI SCHOOL
- SULLIVAN TAQUERIA

**GREENE STREET**

- miu miu
- STELLA MCCARTNEY
- BALENCIAGA
- Cartier
- MCM
- JIL SANDER
- GIVENCHY
- Y3
- PHILIPP PLEIN
- adidas
- CHANEL BEAUTE

**SPRING STREET**

- ALTESI
- PICOOLA CUCINA
- FREDDIE LUCCY
- CUT AND CROPPED
- BARBER SHOP
- KELY FRAZIER HAIR
- MANSION PROPERTY GROUP
- THE MONTESSORI SCHOOL
- SULLIVAN TAQUERIA
- BA'AL cafe & laundri
- BISTRO LES AMIS
- mechiokoi
- AFRICAN DIASPORA
- DV
- BOYHANA
- THE GREAT FROG
- VARLEY
- DR. SILKMAN'S
- GROUND SUPPORT
- ELLEEN FISHER
- DIA
- REISS
- Free People
- RL
- PISTERZI
- IRINA FERRY
- SOHO GEM
- REVIVING.COM
- NYC BLINDS
- SUNRISE MART
- MARIEELLE
- DR. SE TO BE
- OVER JAMES GALLERY (PND RJ)
- SEIKO OPTIC
- JENNIFER FISHER
- LADUREE
- Bonpoint
- Fekhai
- BIUEMIE
- LUCA FALONI
- JONATHAN ADLER
- TECHNOGYM
- CIPRIANI
- SERHANT
- PARRACELSO
- CHEZ FAN FAN (COMING SOON)

**WOOSTER STREET**

- MACKAGE
- EMPORIO ARMANI
- LONGCHAMP
- Swatch
- LONGINES
- KENDRA SCOTT
- Paul Smith
- The Real Real
- ESSENTIEL ANTWERP
- GENTLE MONSTER
- BURTON
- FERRAGAMO
- LAFAYETTE 148 NEW YORK
- MOOSE KNUCKLES
- DR. SMOOD
- GUIZIO
- LOEWE
- ANINE BING
- ALEXANDER MCQUEEN
- PAT BO
- BYREDO
- MOOSE KNUCKLES
- DR. SMOOD
- MACKAGE
- THE GREAT
- Route
- MOUSSY
- ODDO MAT
- BREN FINE ART

**GREENE STREET**

- DIESEL
- BIRKENSTOCK
- SAINT LAURENT
- VERONICA BEARD
- AMIRI
- STONE ISLAND
- INTERIOR DEFINE
- REFORMATION
- WATCHES OF SWITZERLAND
- ORIGINAL BTC
- GOLDEN GOOSE
- PARAJUMPERS
- LOVE SHACK FANCY
- PAIGE

**BROOME STREET**

- SOHO DRY CLEANING
- TENDER CRUSH
- BLANK STREET
- papaculture
- CHEZ FAN FAN (COMING SOON)
- ANISHA RESTAURANT
- OLIVER PEOPLES COVVELLI
- KEN'S BROOME
- UPJET MITCOO
- BOWERY BANGERS (soon)
- GOURMET GARAGE
- FRED PERRY
- LASVIT
- YOHJI YAMAMOTO
- 260
- RON DORFF
- ISABEL MARGANT
- FORMAT FURNITURE
- A.L.C.
- SAVOR BEDS
- ADELHI COFFEE & TEA
- Designal
- RUDY'S MUSIC



182  
SPRING  
STREET

PLEASE CONTACT:

MICHAEL GLANZBERG

212.604.9004

[michael@sinvin.com](mailto:michael@sinvin.com)

CHRISTOPHER OWLES

212.604.9002

[chris@sinvin.com](mailto:chris@sinvin.com)

 **SINVIN**  
COMMERCIAL REAL ESTATE & ADVISORY