

3 FULL FLOORS WITH INCREDIBLE  
LIGHT & VIEWS AT THE CORNER  
OF CHURCH STREET



2nd Floor | 6th Floor | 12th Floor

# THIRTY VESEY

### ENTIRE 2ND FLOOR

Size.....4,826 RSF  
Term.....Negotiable  
Possession.....Immediate  
Asking Rent.....Inquire

### ENTIRE 6TH FLOOR

Size.....4,826 RSF  
Term.....Negotiable  
Possession.....Immediate  
Asking Rent.....Inquire

### ENTIRE 12TH FLOOR

Size.....4,826 RSF  
Term.....Negotiable  
Possession.....Immediate  
Asking Rent.....Inquire

### NOTES:

- Full floors with four sides of windows on the 6th and 12th floors
- 12' ceilings and oversized windows on the 2nd floor
- Unobstructed views of Midtown, Downtown, and The Hudson River
- Landlord to deliver brand-new creative installations
- Can be delivered furnished
- Tenant-controlled A/C
- Attended lobby and brand-new elevators
- Convenient to multiple subway lines and the NJ PATH

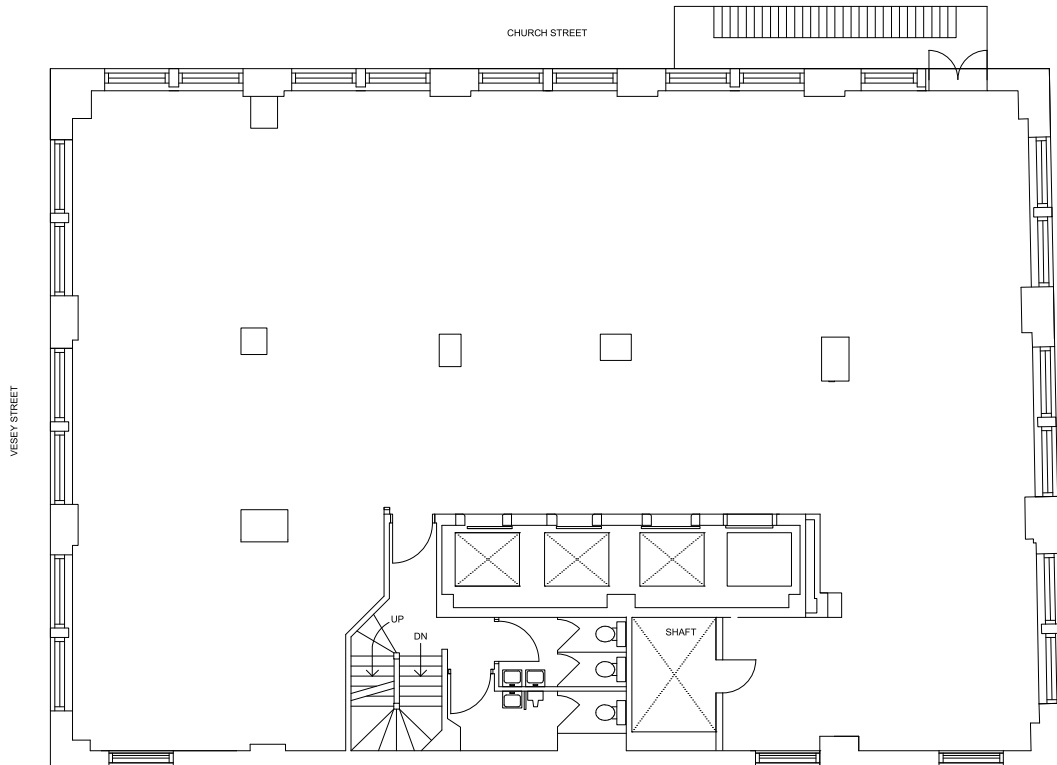


Sample photos showing creative pre-build finishes



Sample photos showing creative pre-build finishes

## FLOOR PLAN



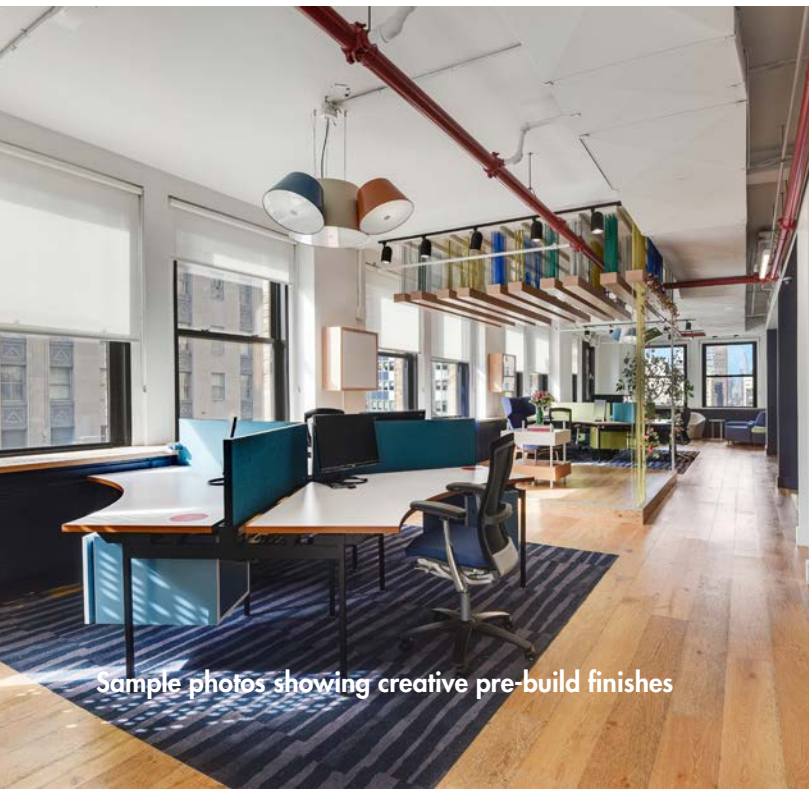


Sample photos showing creative pre-build finishes

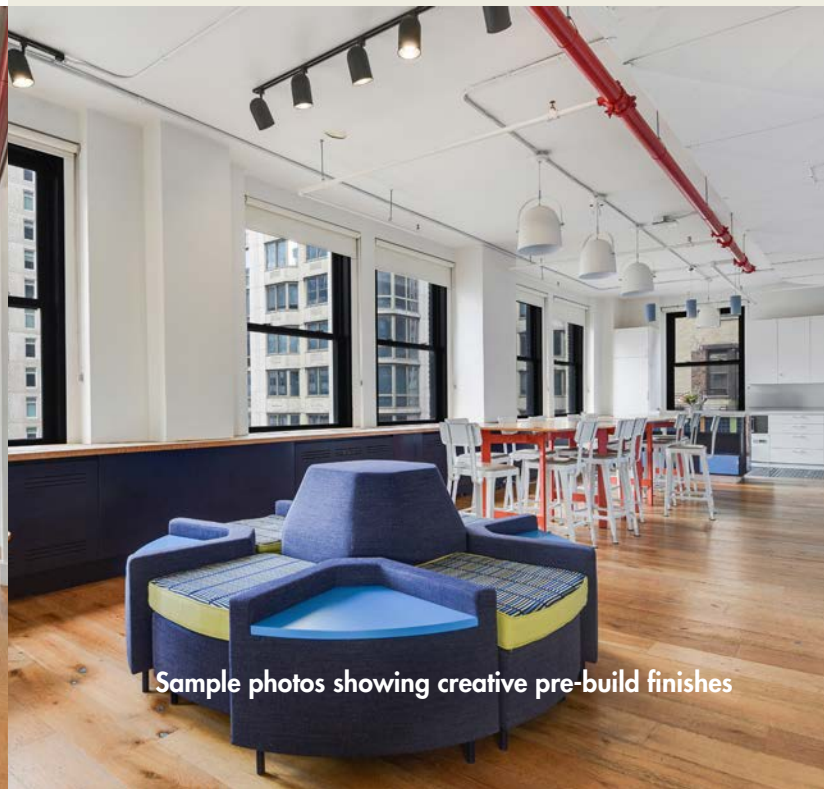
# THIRTY VESEY

PLEASE CONTACT:

**James Costello**      **Trisha Etienne**  
646.599.2391      646.201.5144  
james@sinvin.com      trisha@sinvin.com



Sample photos showing creative pre-build finishes



Sample photos showing creative pre-build finishes