

225
WEST 17TH ST

FOR SALE | PRIME RETAIL IN THE HEART OF CHELSEA | BETWEEN 7TH & 8TH AVENUES



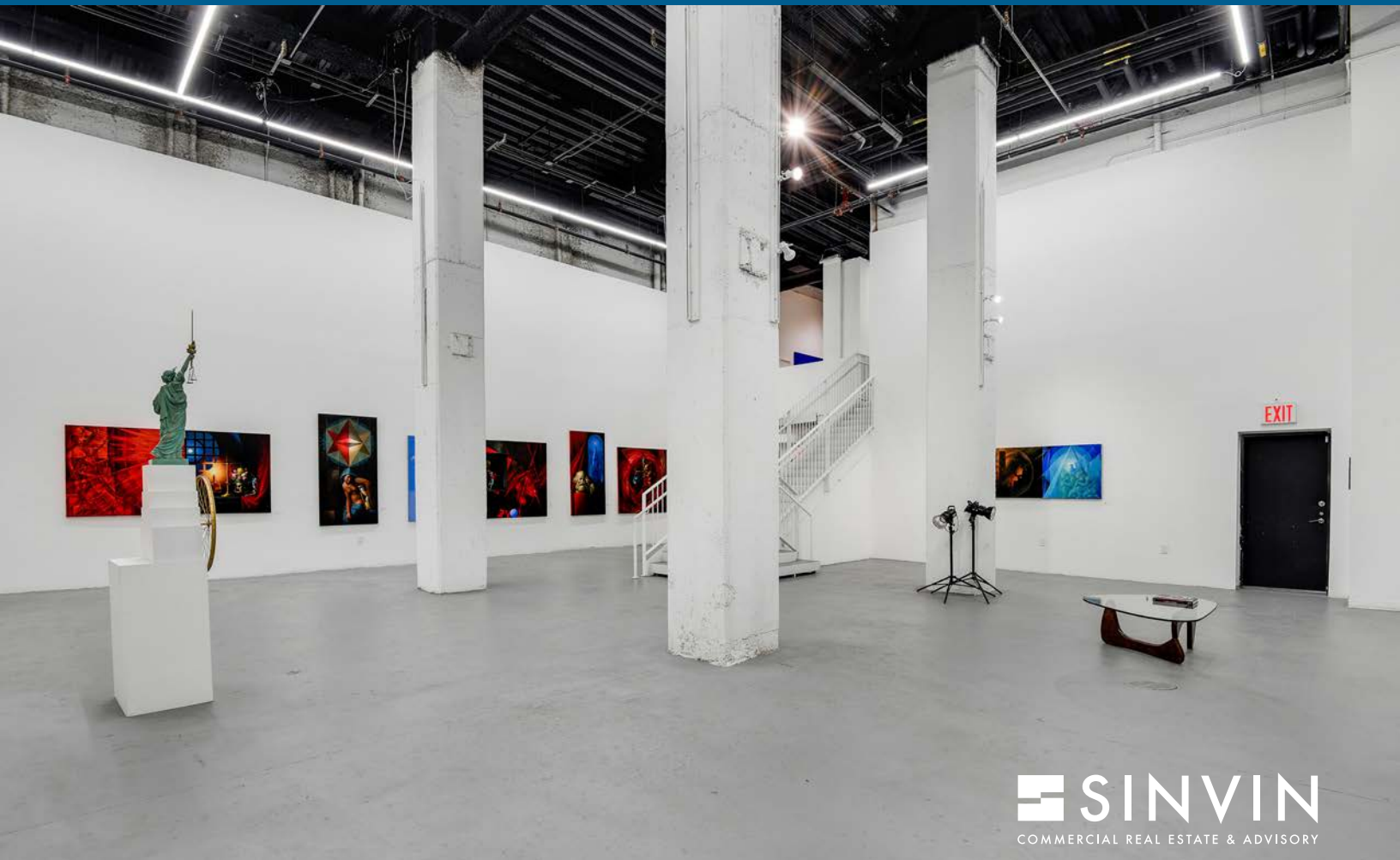
Notes:

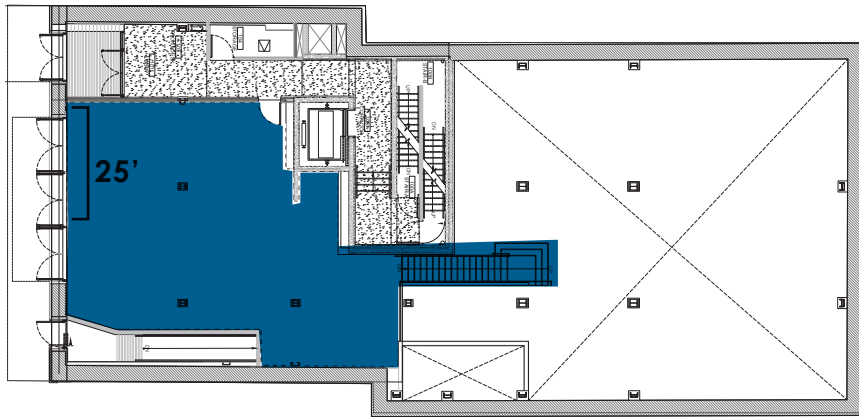
- Ground street entrance with dramatic double height ceilings in back
- Currently built out as an art gallery
- All uses considered, venting infrastructure in place
- Internal elevator to lower level
- Newly renovated
- Additional mezzanine space in lower level



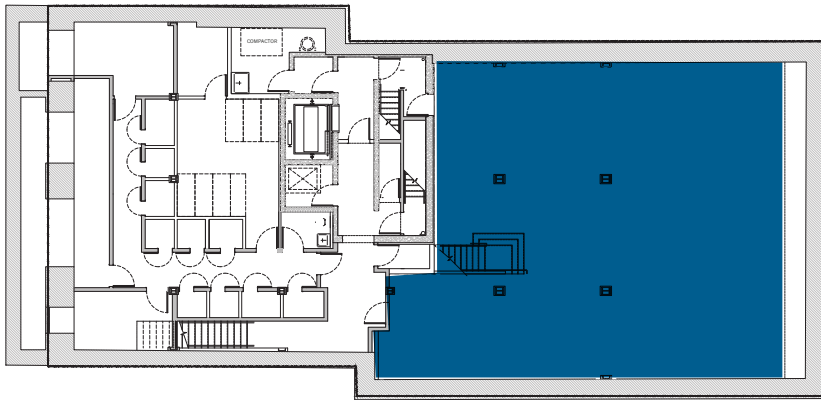
Possession: **Arranged** | Asking Price: **Please Inquire**

Ground Level	Lower Level	Total Size	Frontage	Ceiling Height	Ceiling Height
1,359 Square Feet	2,948 Square Feet	4,307 Square Feet	25' —	11' Ground Level	22' 8" Lower Level





Ground Floor



Lower Level

Nearby headquarters for major tech, media, retail, and financial tenants, including Google, X, Room and Board and Aescape.

Neighbors:

- Room & Board
- Haute Living
- William Sonoma
- The Shade Store
- The Boardroom
- Housing Works
- West Elm
- Safavieh
- Lyon's Den
- 3 Guys
- Tend

SINVIN
COMMERCIAL REAL ESTATE & ADVISORY





Please Contact:

Christopher Owles
212.604.9002
chris@sinvin.com

Margie Sarway
646.673.8742
margie@sinvin.com

 **SINVIN**
COMMERCIAL REAL ESTATE & ADVISORY

225
WEST 17TH ST

