

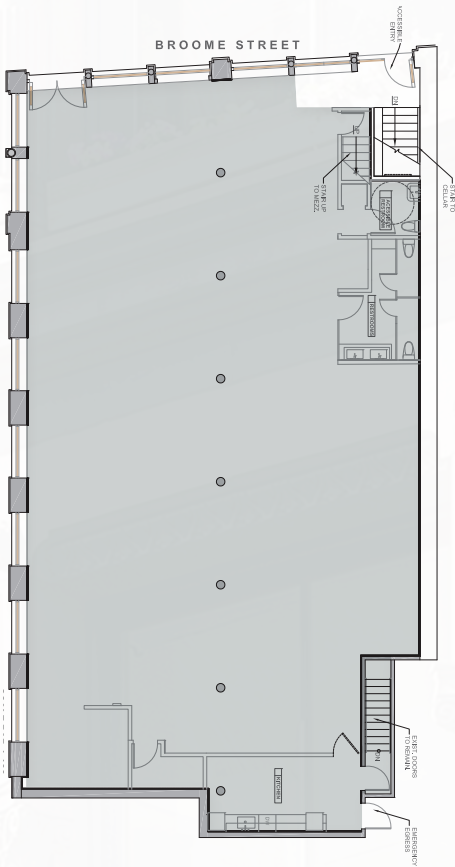


425
BROOME
Lower Level Retail

CALLING EDUCATION, SCHOOLS, TRAINING AND DEVELOPMENT USES! DELIVERING A FULLY-TURNKEY SOLUTION FOR THE RIGHT OPERATOR!



Ground Level



Lower Level

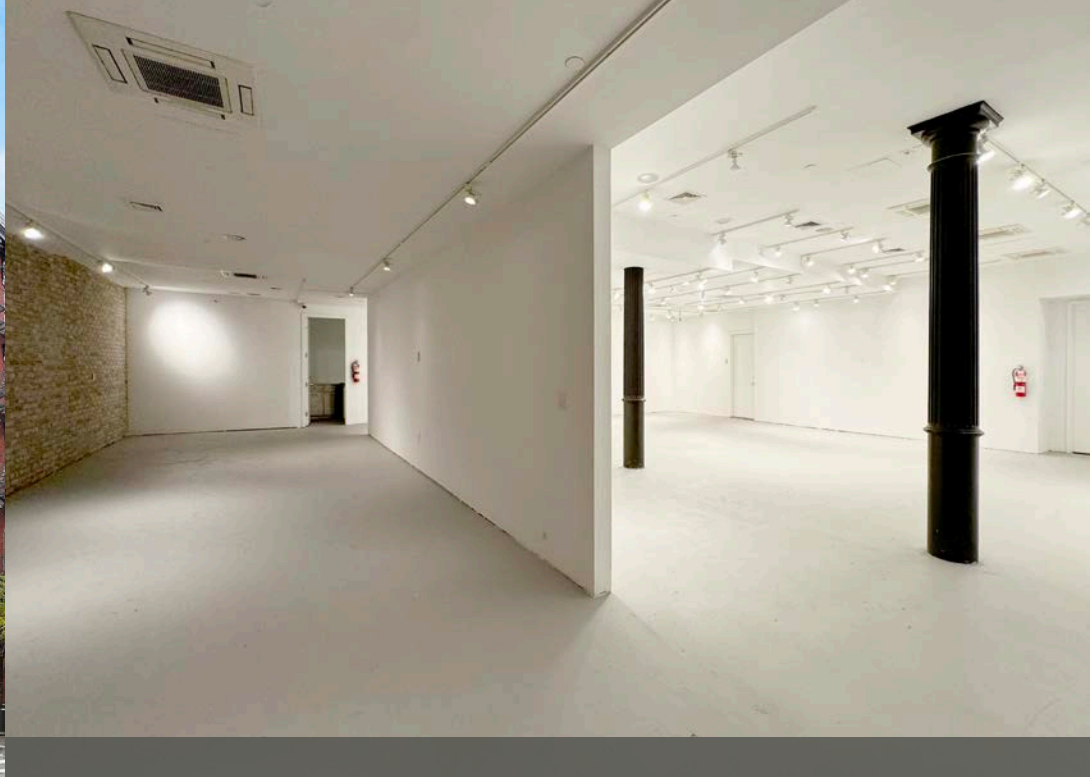


DETAILS

Ground Level: **75 Square Feet** | Selling Lower Level: **5,600 Square Feet** | Frontage: **16 Feet**
Possession: **Immediate** | Ground Ceiling Height: **Approx. 15.5'** | Lower Ceiling Height: **11'**
Asking Rent: **Please Inquire**

NOTES

- Fully legal for all Use Group 6 Uses
- Brick and cast-iron building dating from 1874
- Space is ADA compliant
- Restrooms and pantry on lower level
- Tenant Controlled water-chilled HVAC units and heating
- Turnkey white boxed space with distributed lighting, electric and utilities throughout



MERCER STREET

- **ATM**
- DONALD JUDD MUSEUM
- **retrofête**
- **IKEA**

BROADWAY

- **HOLLISTER**
- **crocs**
- **LACOSTE**
- **GUESS**
- POP MART
- **UNI OIG**
- **SCHUTZ**
- **SUPERGA**
- ARMANI EXCHANGE
- Calvin Klein
- **SKETCHERS**
- CLUB MONACO
- **MoMA**

CROSBY STREET

- CARD VAULT
- **knix**
- INDAY
- JOE & THE JUICE
- **stockX**
- **G-STAR**
- MIMIS
- **MIN & MON**
- **RECORD STORE**
- OAK BERRY
- SOFTSIDE
- UPSIDE PIZZA
- **Sant Ambroeus**
- BESPOKE BROWS
- THIERRY LASRY
- PEAK DESIGN
- BREWUTA
- FIVE SPICE
- **Kiehl's**
- **Ruby's**
- MATCHAFUL

MULBERRY STREET

NEIGHBORING RETAILERS:

MERCER STREET

- **alo yoga**
- **CHASE**
- sunglass hut
- MANIERE DE VOIR
- BRANDY MELVILLE
- URBAN REVIVO
- **TUMI**
- **ZARA**
- **PACSUN**
- WINDSOR
- **Levi's**
- MYSTIQUE
- **IRO**
- **3NY**
- B.A. DUCHI
- **CW**
- Daniel Wellington
- dolce vita

BROADWAY

- **CHASE**
- @ululemon
- Abercrombie & Fitch
- **editybea**
- @Valucine
- PRINCESS POLLY
- DOM
- COTTON+ON
- NINO MIER GALLERY
- **UNO-90**
- GARAGE
- **MAC**
- **drybar**
- **bloomingdales**
- **PINK**
- **Subdued**
- BROKEN ENGLISH
- STEVE MADDEN
- SUNDAY CITIZEN
- A-FRANCE MOMENT

CROSBY STREET

- **STARBUCKS**
- **Glossier**
- KREWÉ
- OAK + FORT
- **patagonia**
- LUCKYS
- OFFICINE GENERALE
- MORINI
- **MIZ WALLACE**
- CAFE SELECT
- Mitchell Gold + Bob Williams
- **LA ESQUINA**
- CITIZENS OF SOHO
- **KOIO**
- DESPANA FINE FOODS
- **LA PETROSINO SQUARE**
- DUANE YOUTH
- JAPANESE MARKET
- **CAVA**
- HOME'S DONUTS
- HELEN FICALORA
- 19 CLEVELAND
- **CHAMPION PIZZA**

BROADWAY

- **patagonia**
- LUCKYS
- OFFICINE GENERALE
- MORINI
- **MIZ WALLACE**
- CAFE SELECT
- Mitchell Gold + Bob Williams
- **LA ESQUINA**
- CITIZENS OF SOHO
- **KOIO**
- DESPANA FINE FOODS

- **GOLDEN GOOSE**
- **EATALY**
- **IRO**
- **ISABEL MARANT**
- **Sant Ambroeus**
- **DESPANA**

MERCER STREET

- JAMES PERSE
- ORLEBAR BROWN
- **Polène**
- **BUCK MASON**
- LE YORCK SPA
- **Levi's**
- BIBLIOTHEQUE
- THE FLOWERY
- KEETSA
- babylist
- SLOOMOO
- THINK COFFEE
- **PARIS / 64**
- **GANNI**
- **CHIMI**
- **AWET**
- **tribotax**

BROADWAY

- **BUCK MASON**
- LE YORCK SPA
- LOS ANGELES ARMARIL
- CITIBANK
- NC OUTLETS
- SKIN1004
- **260**
- **THE CHATELAIN**

CROSBY STREET

- **425**
- **Platbon**
- **BONOBOS**
- ATO SALON
- FELLOW BARBER
- SATURDAYS
- **GRAY MATTERS**
- LAUREN MANOOGHIN
- A.P.C. SURPLUS
- **CLIC GALLERY**
- **APIECE APART**
- **FLOUR SHOP**
- **SUSHIDELIC**
- **LANDMARK COFFEE SHOP**
- **SENA TATTOO**

BROADWAY

- **425**
- **Platbon**
- **BONOBOS**
- ATO SALON
- FELLOW BARBER
- SATURDAYS
- **GRAY MATTERS**
- LAUREN MANOOGHIN
- A.P.C. SURPLUS
- **CLIC GALLERY**
- **APIECE APART**
- **FLOUR SHOP**
- **SUSHIDELIC**
- **LANDMARK COFFEE SHOP**
- **SENA TATTOO**

- **ISABEL MARANT**
- **Sant Ambroeus**
- **DESPANA**

MERCER STREET

- **GANNI**
- **CHIMI**
- **AWET**
- **tribotax**

CROSBY STREET

- **LANDMARK COFFEE SHOP**
- **SENA TATTOO**

- **DESPANA**

PLEASE CONTACT:

David J. Baker
212.604.9003
david@sinvin.com

 **SINVIN**
COMMERCIAL REAL ESTATE & ADVISORY

