

25

WEST 14TH STREET
Between Fifth & Sixth Avenues





A

Ground Level ————— **3,111 Square Feet**

Frontage ————— **20'**

Ceiling Height ————— **15'**

Term ————— **Long Term**

Possession ————— **Immediate**

Asking Rent ————— **Please Inquire**

Ground Level ————— **3,469 Square Feet**

Frontage ————— **35'**

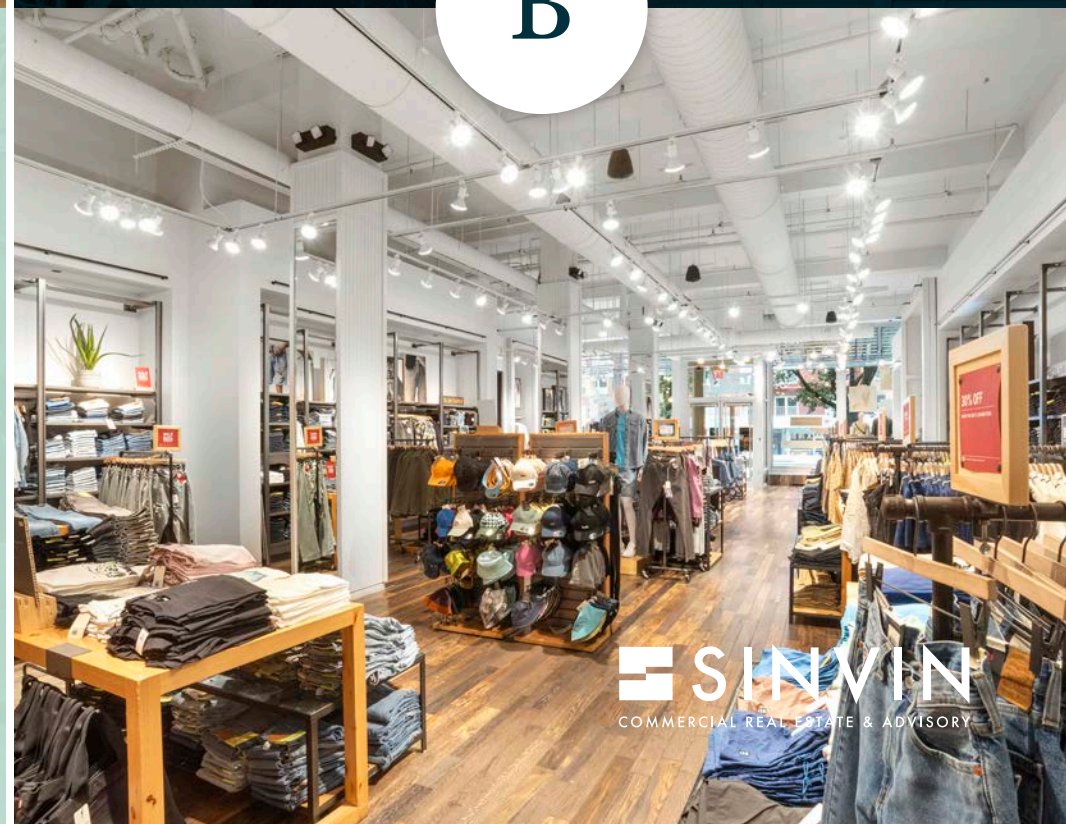
Ceiling Height ————— **18'**

Term ————— **Long Term**

Possession ————— **Immediate**

Asking Rent ————— **Please Inquire**

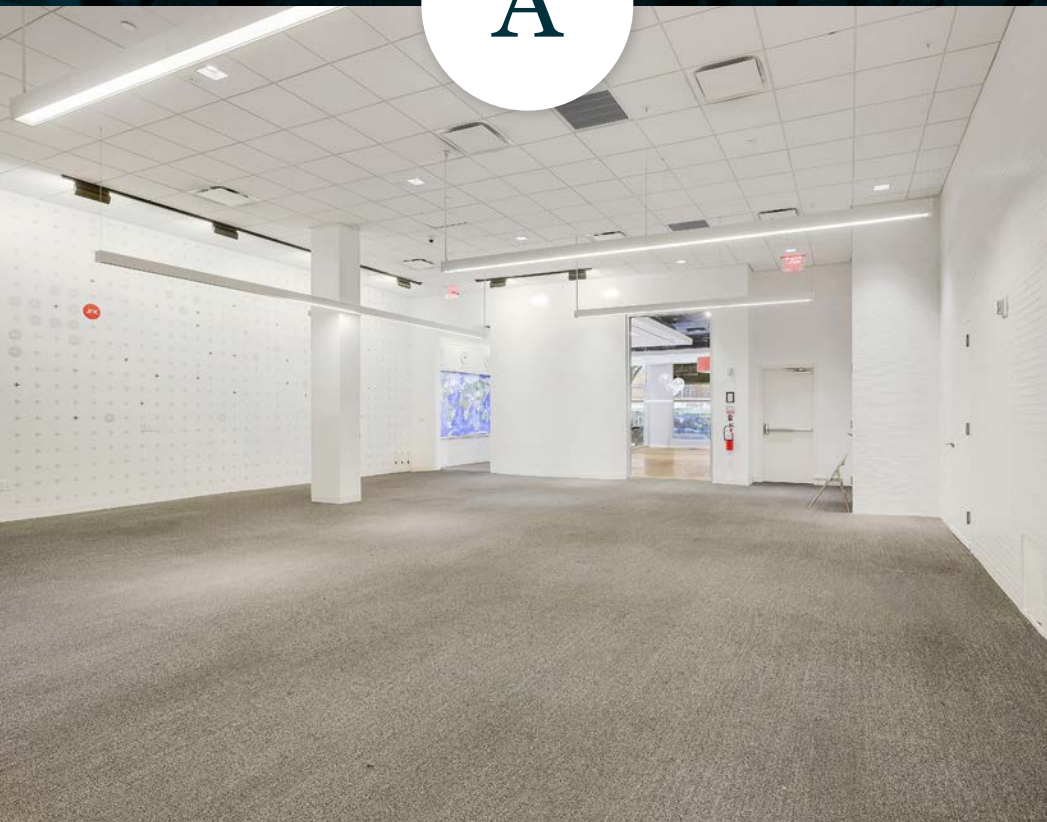
B



Space Notes:

- All uses considered
- Spaces A and B can be combined for 6,580 SF or leased separately
- Prominent signage opportunities
- Close proximity to Union Square, Chelsea, & West Village
- New direct lease

A



B



Neighbors Include:

- Guitar Center
- CompleteBody
- CityMD
- CVS
- Foot Locker
- Fleet Feet
- Cohen's Fashion Optical
- Counter Service
- Five Guys
- Chase Bank
- Republic Bank
- The New School

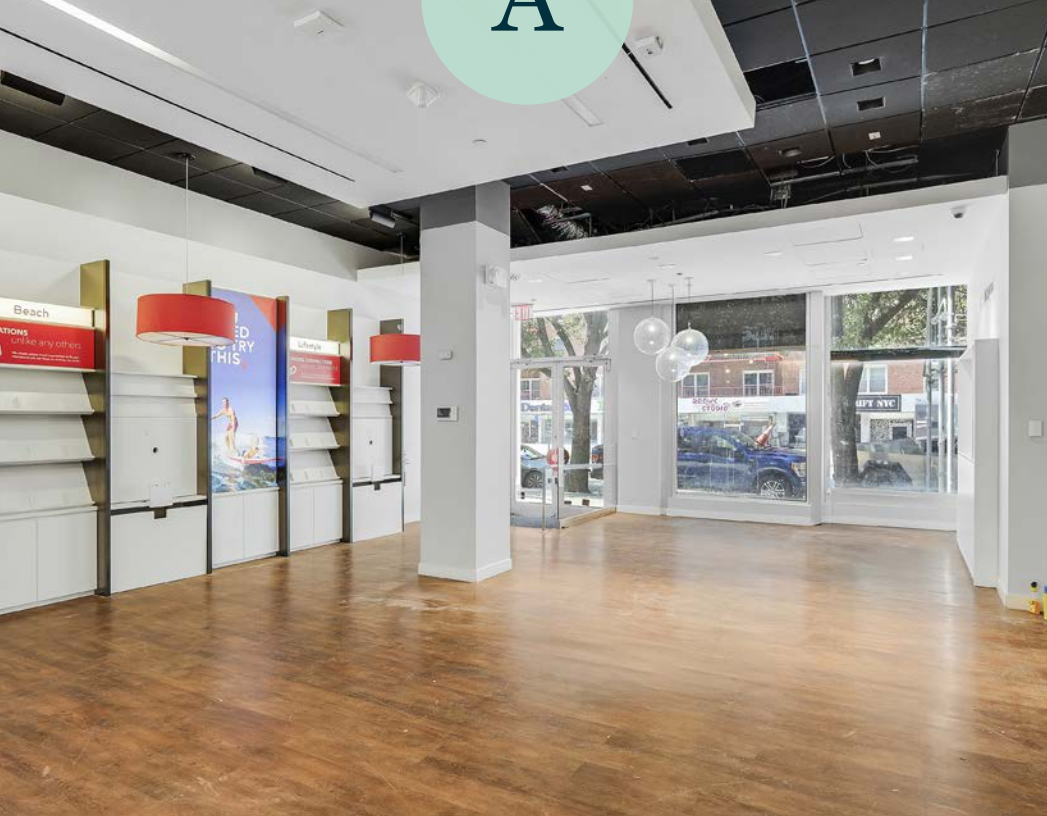




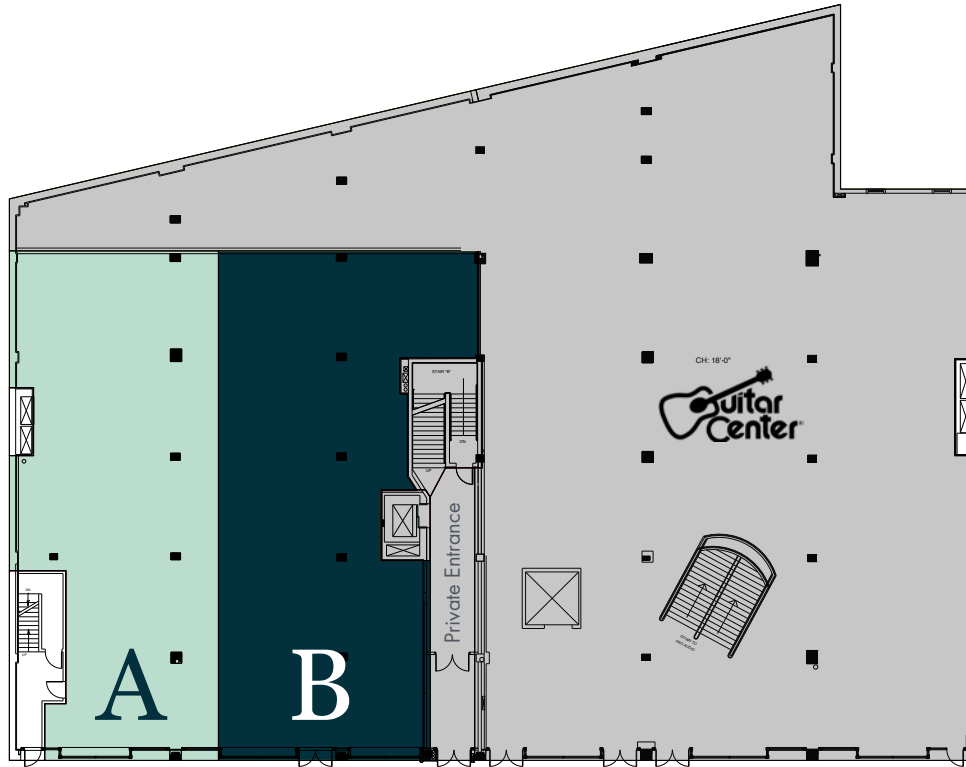
A



B



SINVIN
COMMERCIAL REAL ESTATE & ADVISORY



Please Contact:

Christopher Owles
212.604.9002
chris@sinvin.com

Teddy Srour
646.201.5143
teddy@sinvin.com

Daniel Juan-Yepes
914.386.9617
daniel@sinvin.com