



YMCA of Eastern Delaware County

EARLY SPRING

ARTS/SPORTS & SWIM

REGISTRATION
OPENS
Monday, Jan. 26
(Members)
Wednesday, Jan. 28
(All)

www.cyedc.org
610.557.9622

ARTS/SPORTS PROGRAMS
MONTHLY SESSION DATES:
MARCH: 3.2 – 3.29.2026
APRIL: 3.30 – 4.26.2026

SWIM LESSON PROGRAM
SESSION DATES:
MARCH 2 – APRIL 26, 2026

LANDSDOWNE YMCA
2110 GARRETT ROAD
LANDSDOWNE, PA 19050
610.557.YMCA (9622) EXT. 1

RIDLEY AREA YMCA
900 SOUTH AVENUE
SECANE, PA 19018
610.557.YMCA (9622) EXT. 2

SPRINGFIELD YMCA
194 W. SPROUL RD
SPRINGFIELD, PA 19064
610.557.YMCA (9622) EXT. 3



SPRINGFIELD YMCA SWIM LESSONS

SWIM LESSON PROGRAM
SESSION DATES:
MARCH 2 – APRIL 26, 2026



8 WEEK SESSION:
PARENT/CHILD, PRESCHOOL
MEMBER \$84
NON-MEMBER \$168

SCHOOL AGE/TEEN/ADULT
MEMBER \$126
NON-MEMBER \$252



MONDAY

Preschool 1	5:00 – 5:30pm
Preschool 2	5:35 – 6:05pm
Preschool 3	6:10 – 6:40pm
Preschool 4	6:10 – 6:40pm

WEDNESDAY

School Age 1	5:00 – 5:40pm
School Age 2	5:40 – 6:20pm
School Age 3	6:20 – 7:00pm
School Age 4/5	6:20 – 7:00pm

Adult	9:00 – 9:40am
-------	---------------

SATURDAY

Parent & Child	9am – 9:30am
Preschool 1	9:35 – 10:05am
Preschool 2	9:35 – 10:05am
Preschool 3	10:10 – 10:40am
Preschool 4	10:10 – 10:40am
School Age 1	10:45 – 11:25am
School Age 2	10:45 – 11:25pm
School Age 3	11:25 – 12:05pm
School Age 4/5	11:25 – 12:05pm

REGISTRATION
OPENS
Monday, Jan. 26
(Members)
Wednesday, Jan. 28
(All)

www.cyedc.org
610.557.9622



LEARN MORE:

Nikki Smith
Aquatics Director
610.557.9825 Direct
nsmith@cyedc.org



NOW BOOKING PRIVATE SWIM LESSONS!

A great opportunity for your family members to receive personalized instruction while learning to swim.



SPRINGFIELD YMCA

Youth Sports



MONTHLY SESSIONS

Member \$63 Non-member \$126

MARCH: 3.2 - 3.29.2026

APRIL: 3.30 - 4.26.2026



BASKETBALL CLINICS

Tuesdays

Ages 4 to 6 1-1:45pm

Ages 2 to 3 2-2:45pm

Blue turf, Parent participation required

Thursdays

Ages 6 to 9 5:15-6pm

Bball Court B

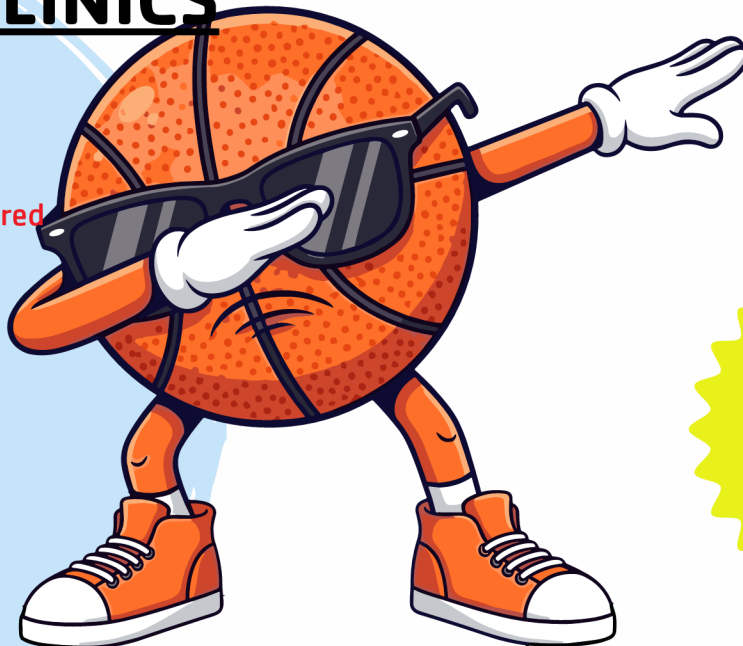
Thursdays

NEW
3v3 League

Ages 10 to 13 6 - 7pm

Coed, beginner to intermediate level

Bball Court B



LEARN
MORE:

Trevor Gasiorowski
Sports Director
610.557.YMCA(9622), ext.
5013
610.557.9826 Direct
tgasiorowski@cyedc.org

REGISTRATION OPENS

Monday, Jan. 26
(Members)

Wednesday, Jan. 28
(All)

www.cyedc.org
610.557.9622

SPEED & AGILITY

Starts Tuesday, March 10!

Tuesdays

Ages 6 to 9 5:30-6:15pm

Ages 10 to 13 6:30-7:30pm

Ages 14 to 17 7:30-8:30pm

Sessions are led by coaches who have collegiate and professional playing experience across various sports.

Blue Turf



SPORTS SAMPLER

Wednesdays 5:15 to 6:00pm Ages 3 to 5 Tennis Court #2

Sundays 12:00 to 12:45pm Ages 3 to 5 Blue Turf

Exposes young athletes
to a variety of sports.



SPRINGFIELD YMCA GYMNASTICS & ARTS



MONTHLY SESSIONS

Member \$63 Non-member \$126

MARCH: 3.2 – 3.29.2026

APRIL: 3.30 – 4.26.2026



MONDAY

Gymnastics

5:15pm – 6pm

Ages 4 – 5

Gymnastics

Room

Gymnastics 1

6:15pm – 7pm

Ages 6 yrs and up

Gymnastics

Room



SPONSORED BY:

KLINE & SPECTER PC

TUESDAY

Gymnastics

1pm – 1:45pm

Ages 4 – 5

Gymnastics Room

Me & You Gymnastics

2pm – 2:30pm

Ages 2 – 3 With Parent/Guardian

Gymnastics Room

Gymnastics 1

4pm – 4:45pm

Ages 6 yrs and up

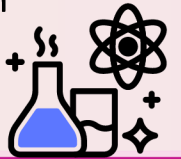
Gymnastics Room

Wacky Science

4pm – 4:45pm

Ages 5 – 8

Child Watch



WEDNESDAY

Emerging Engineers

4pm – 4:45pm

Ages 5 – 8

Child Watch Room



Building with Friends, Constructing Structures and Conducting Tests

THURSDAY

Gymnastics

2pm – 2:45pm

Ages 4 – 5

Gymnastics Room

Gymnastics 1

4pm – 4:45pm

Ages 6 yrs and up

Gymnastics Room



SATURDAY

Acting Class

11am – 12pm

Ages 6 – 10

Pathways Room

Discover how to gain confidence in public speaking, explore various script formats, and engage in enjoyable acting games.



REGISTRATION
OPENS
Monday, Jan. 26
(Members)
Wednesday, Jan. 28
(All)

www.cyedc.org
610.557.9622

LEARN MORE: Trevor Gasiorowski
Sports Director
610.557.YMCA(9622), ext. 5013
610.557.9826 Direct
tgasiorowski@cyedc.org



MONTHLY SESSIONS
MARCH: 3.2 – 3.29.2026
APRIL: 3.30 – 4.26.2026



Monday
BEGINNER LEVEL 1 PICKLEBALL CLINIC
9am to 10:30am
\$75 member, \$150 non-member

Monday
ADVANCED BEGINNER LEVEL 2 PICKLEBALL CLINIC
10:30am to 12:00pm
\$75 member, \$150 non-member

Monday
ADVANCED BEGINNER LEVEL 2 PICKLEBALL CLINIC
5:30pm to 7:00pm
\$75 member, \$150 non-member

Monday
INTERMEDIATE LEVEL 3 PICKLEBALL CLINIC
7:00pm to 8:30pm
\$75 member, \$150 non-member

Tuesday
DINKS, DROPS, & DRIVES LEVEL 4 PICKLEBALL CLINIC
6:00pm to 7:30pm
\$75 member, \$150 non-member

Tuesday **INVITE ONLY**
ADVANCED (4.0+) LEVEL 5 PICKLEBALL CLINIC
7:30pm to 9pm
Must have instructor approval or submit qualifications
\$75 member, \$150 non-member

Thursday
ADVANCED BEGINNER LEVEL 2 PICKLEBALL CLINIC
9am to 10:30am
\$75 member, \$150 non-member

Thursday
INTERMEDIATE LEVEL 3 PICKLEBALL CLINIC
10:30am to 12:00pm
\$75 member, \$150 non-member

Thursday
BEGINNER LEVEL 1 PICKLEBALL CLINIC
5:30pm to 7:00pm
\$75 member, \$150 non-member

Thursday
INTERMEDIATE LEVEL 3
Pickleball Clinic
7:00pm to 8:30pm. \$75 member, \$150 non-member

**REGISTRATION
OPENS**
Monday, Jan. 26
(Members)
Wednesday, Jan. 28
(All)
www.cyedc.org
610.557.9622

LEARN MORE:
Trevor Gasiorowski
Sports Director
610.557.YMCA(9622), ext. 5013
610.557.9826 Direct
tgasiorowski@cyedc.org



SPRINGFIELD YMCA TENNIS



MONTHLY SESSIONS
MARCH: 3.2 – 3.29.2026
APRIL: 3.30 – 4.26.2026

MONDAY ADULT LIVE BALL

7:00pm to 8:30pm

\$30 Drop in Member Fee

TUESDAY HIGH SCHOOL DEVELOPMENT

Ages 12+ 5:30 to 7:00pm

\$150 Member, \$300 Non-Member

WEDNESDAY

Red Ball 4–4:45pm \$75 Member, \$150 Non-Member

Orange Ball 5–6pm \$100 Member, \$200 Non-Member

Green Ball 6–7pm \$100 Member, \$200 Non-Member

SATURDAY

Cardio Tennis 9–10:30am \$30 Drop in Member Fee

Red Ball 10:30–11:15am \$75 Member, \$150 Non-Member

Orange Ball 11:30am–12:30pm \$100 Member, \$200 Non-Member

Green Ball 12:30–1:30pm \$100 Member, \$200 Non-Member



LEARN MORE: Trevor Gasiorowski
Sports Director
610.557.YMCA(9622), ext. 5013
610.557.9826 Direct
tgasiorowski@cyedc.org

**REGISTRATION
OPENS**
Monday, Jan. 26
(Members)
Wednesday, Jan. 28
(All)

www.cyedc.org
610.557.9622